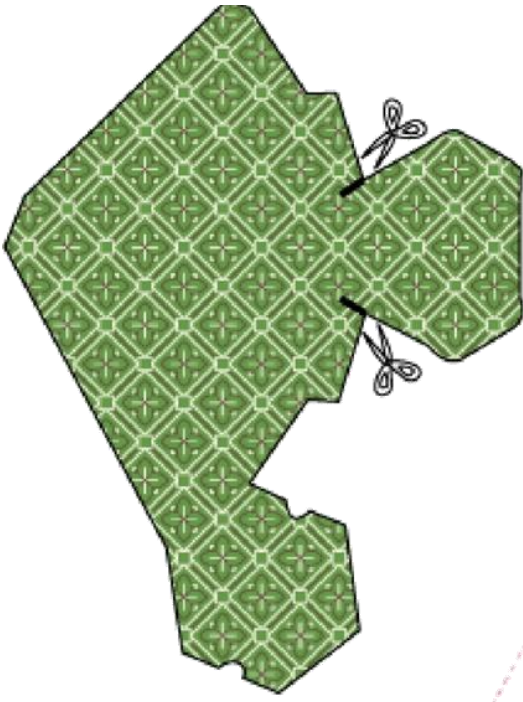
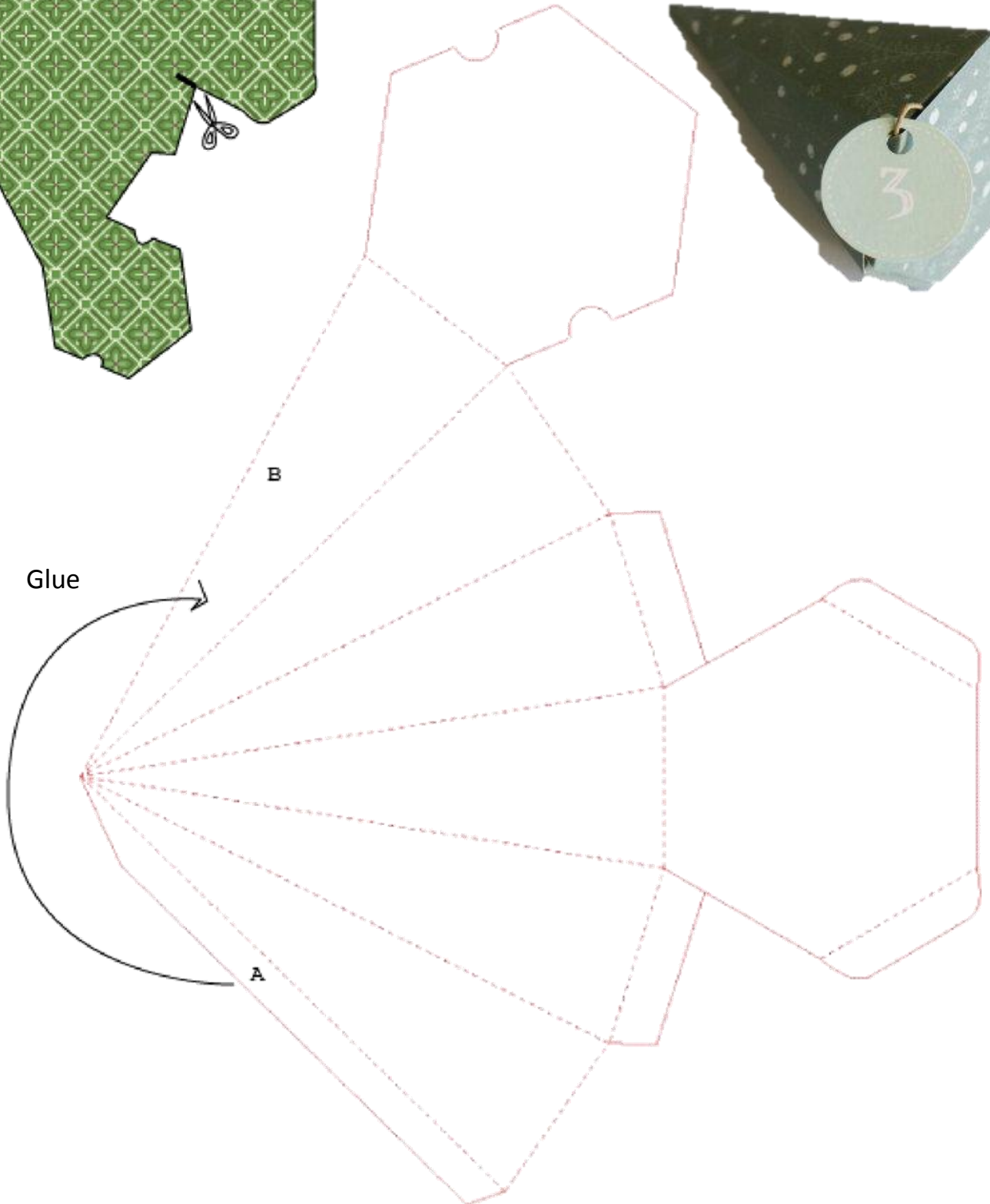


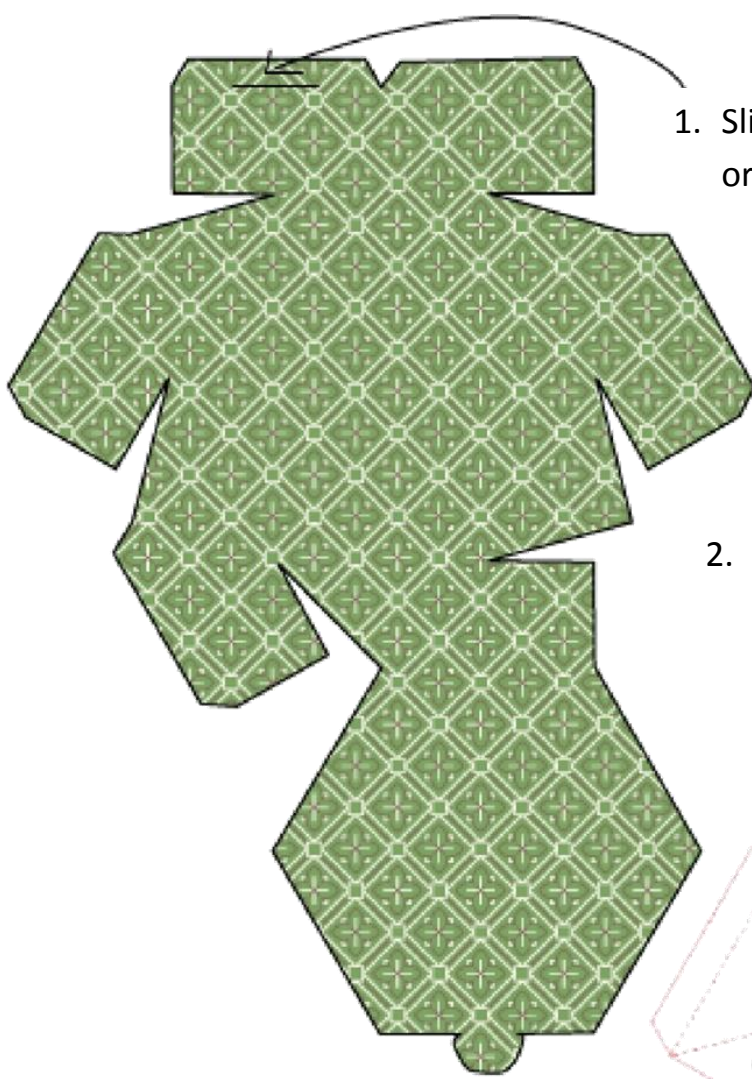
1. Cut out the two tabs with scissors



2. Fold all dotted lines inward.



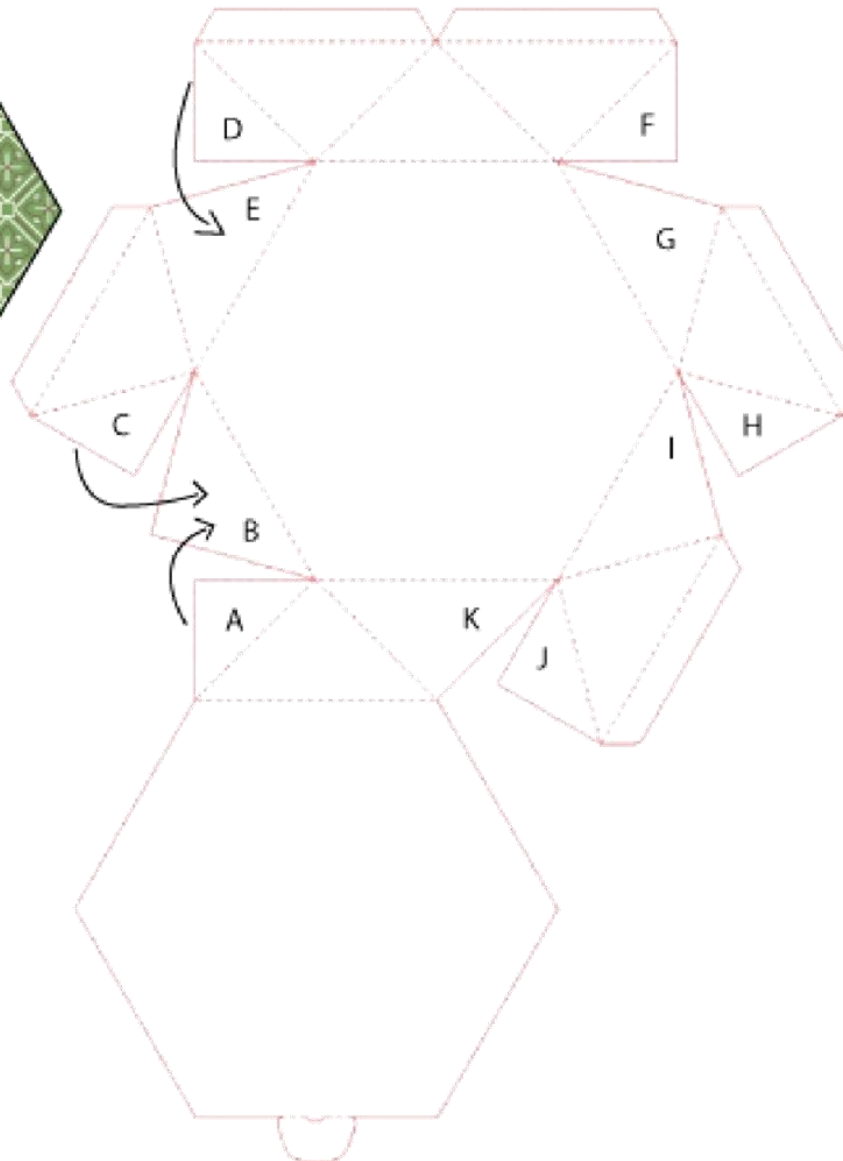
3. Paste A tab inside the B side to place against to close the cone.



1. Slit the line with scissors or a craft blade in order to close box with the tab.



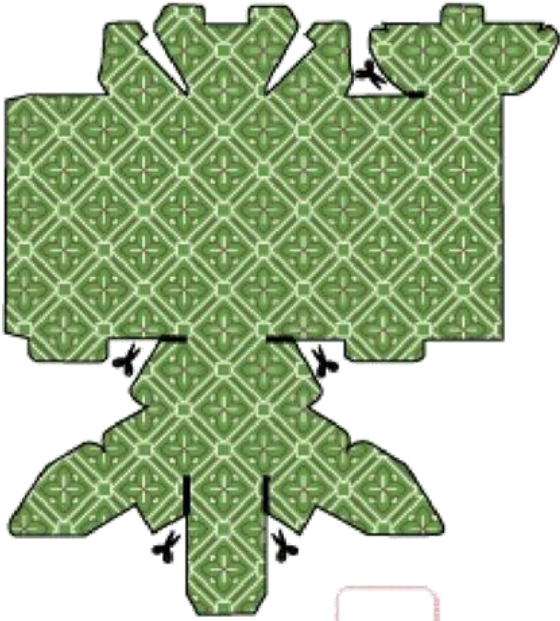
2. Fold all the dotted lines and tabs inward.



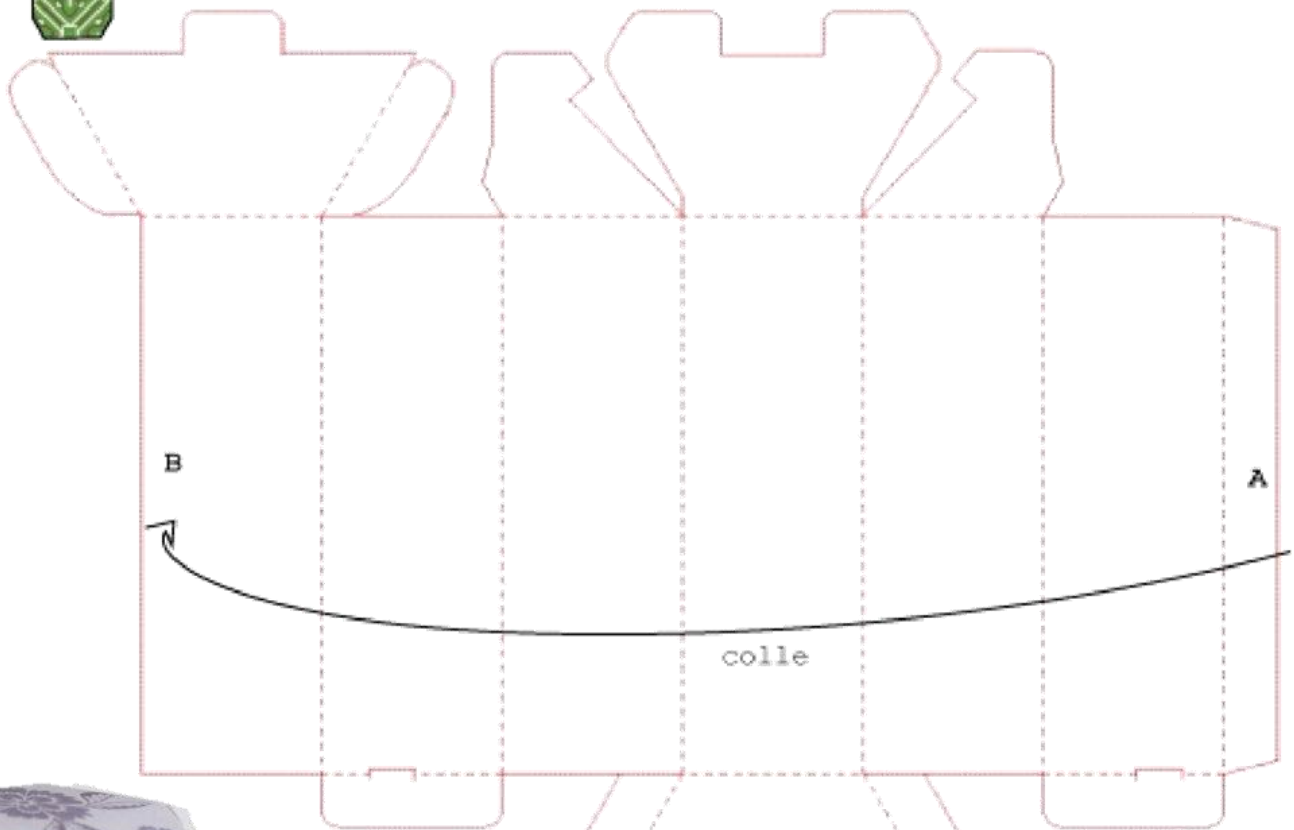
3. Glue tab A to the interior of the side B, C inside B, D inside of E, F inside G, H inside I, K inside of J. Close the lid, close with the tongue.

.e.

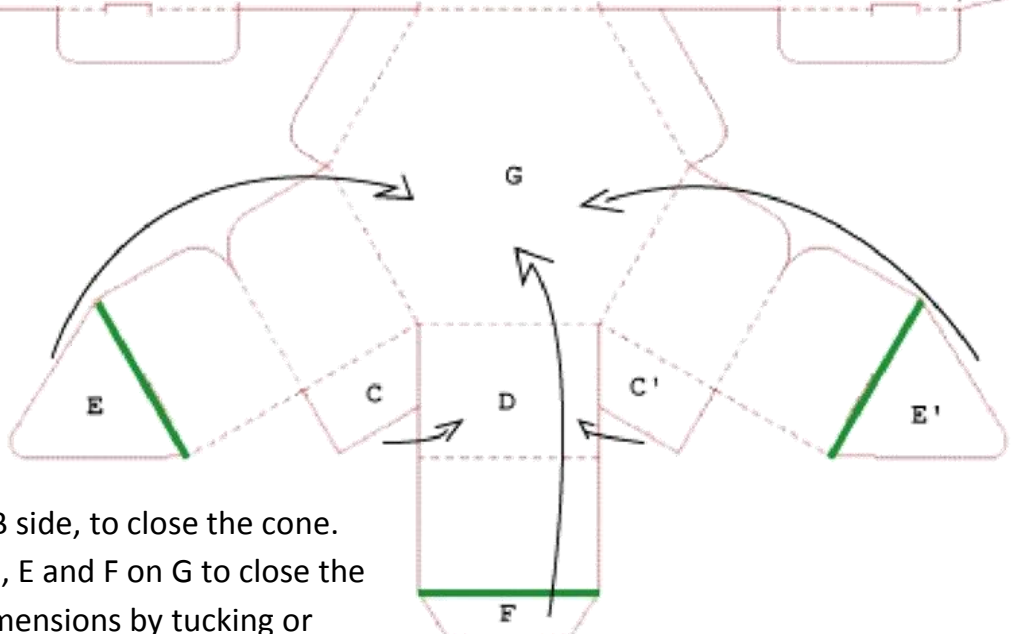
1. Cut out tabs and box with scissors.



2. Fold along all dotted lines, except the green lines, place against spot to fold to create the lid.



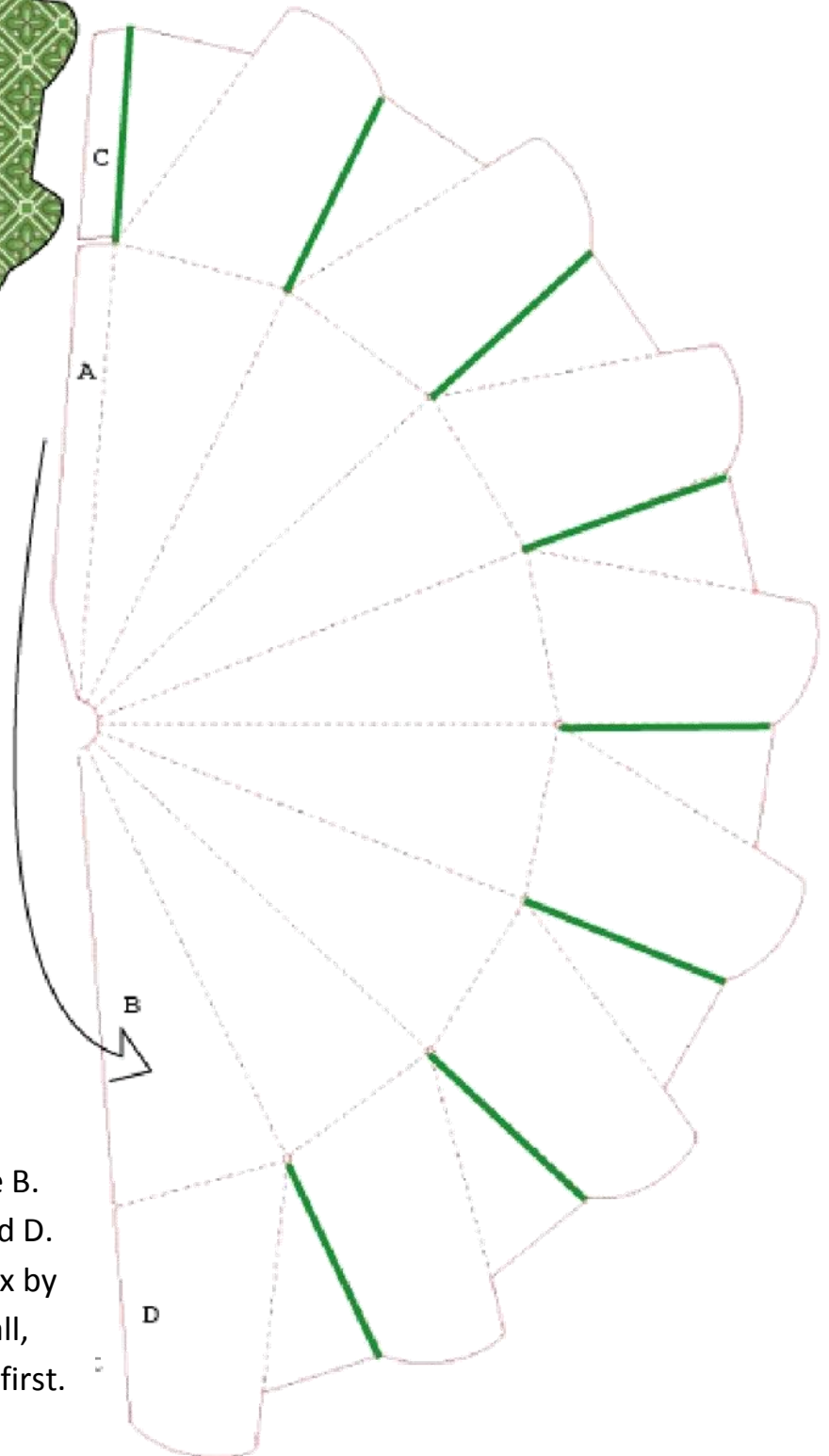
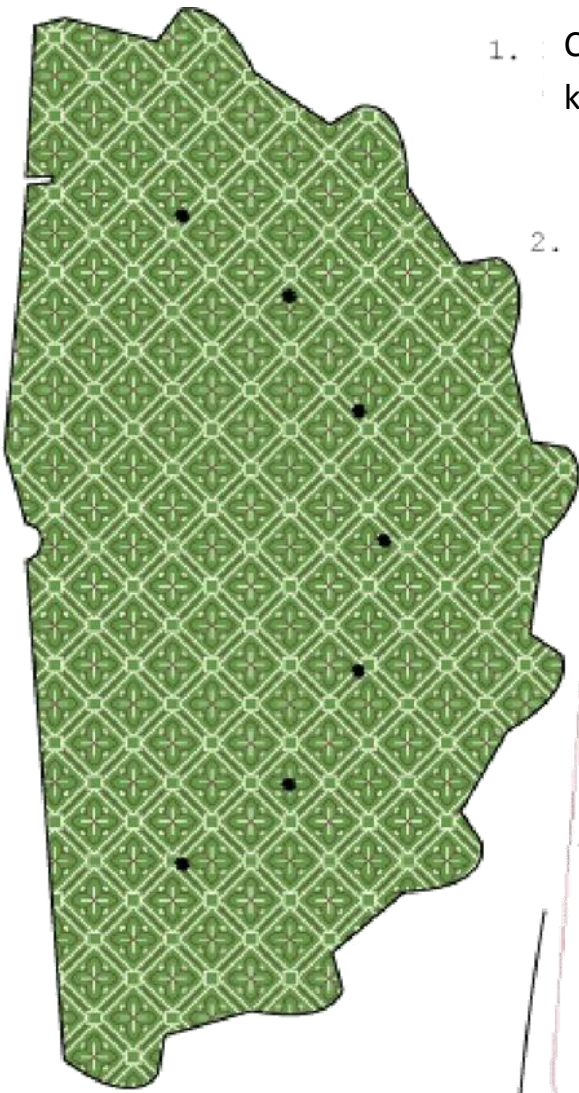
3. Glue tab A is inside the B side, to close the cone. Paste C and C to D and E, E and F on G to close the lid. Close the bottom dimensions by tucking or gluing them.



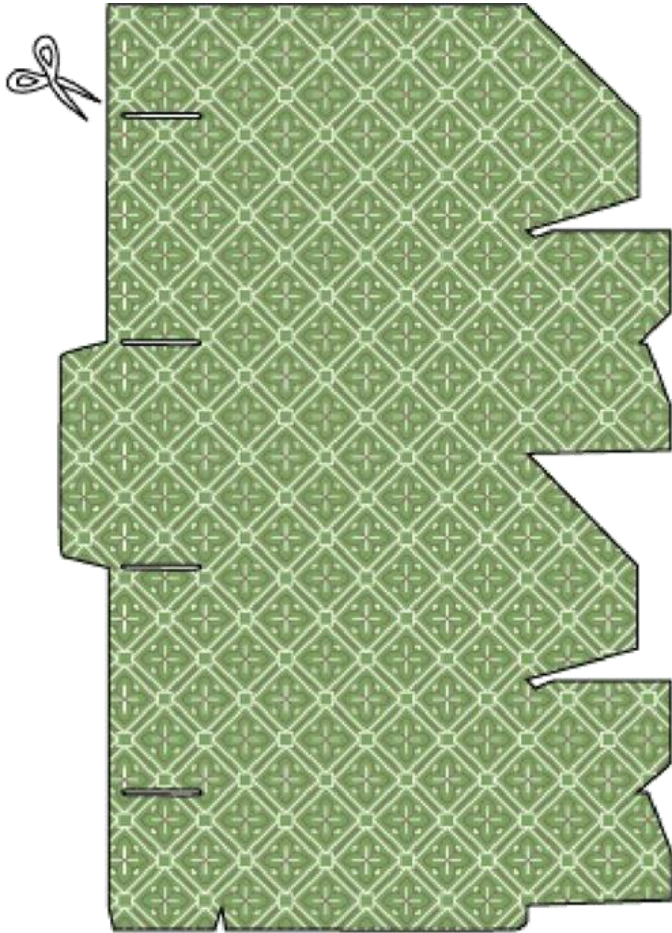
t les côtés entre eux.

1. Cut out the white dots with scissors, craft knife, or small hole punch.

2. Fold in, following all the dots. The green lines are also folded, but they will end up bent in, opposite side against right side to close the box.

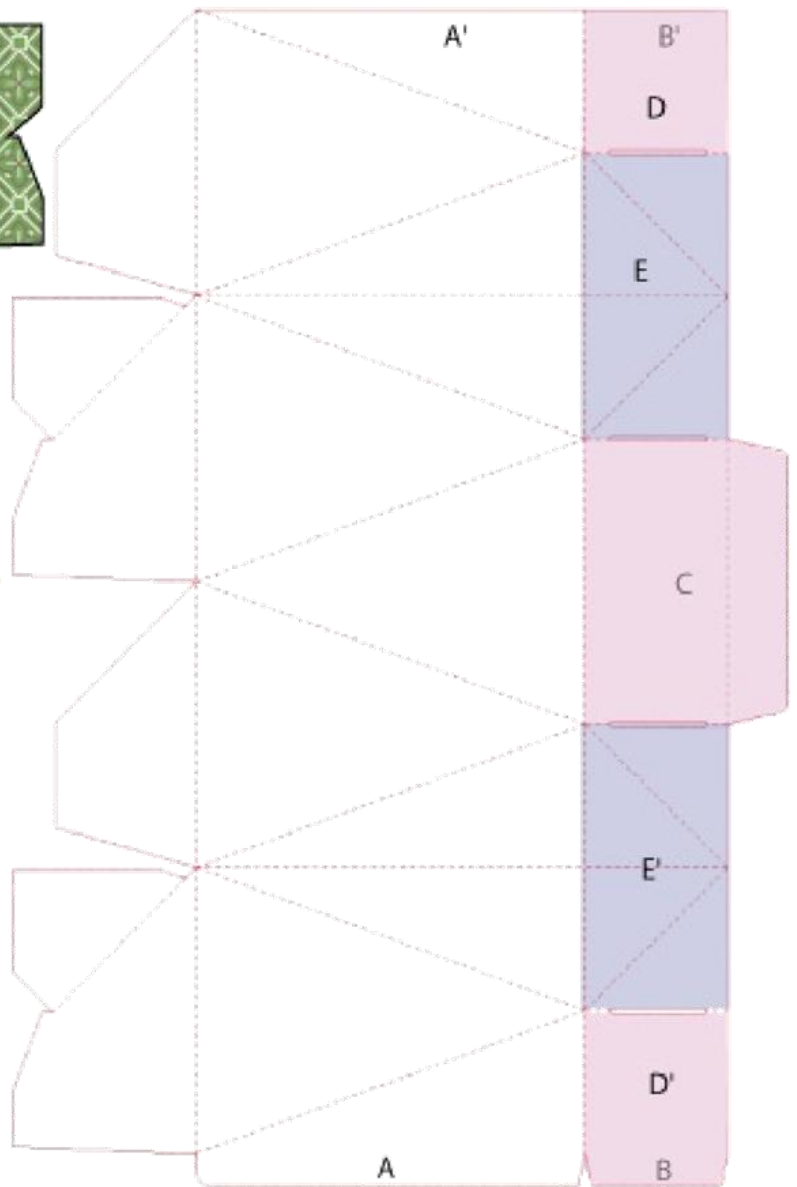


2. Glue tab A to the inside of side B. Do the same with the tab C and D. The cone-shaped, close the box by folding the top star a little small, tuck or glue the last tab in the first.

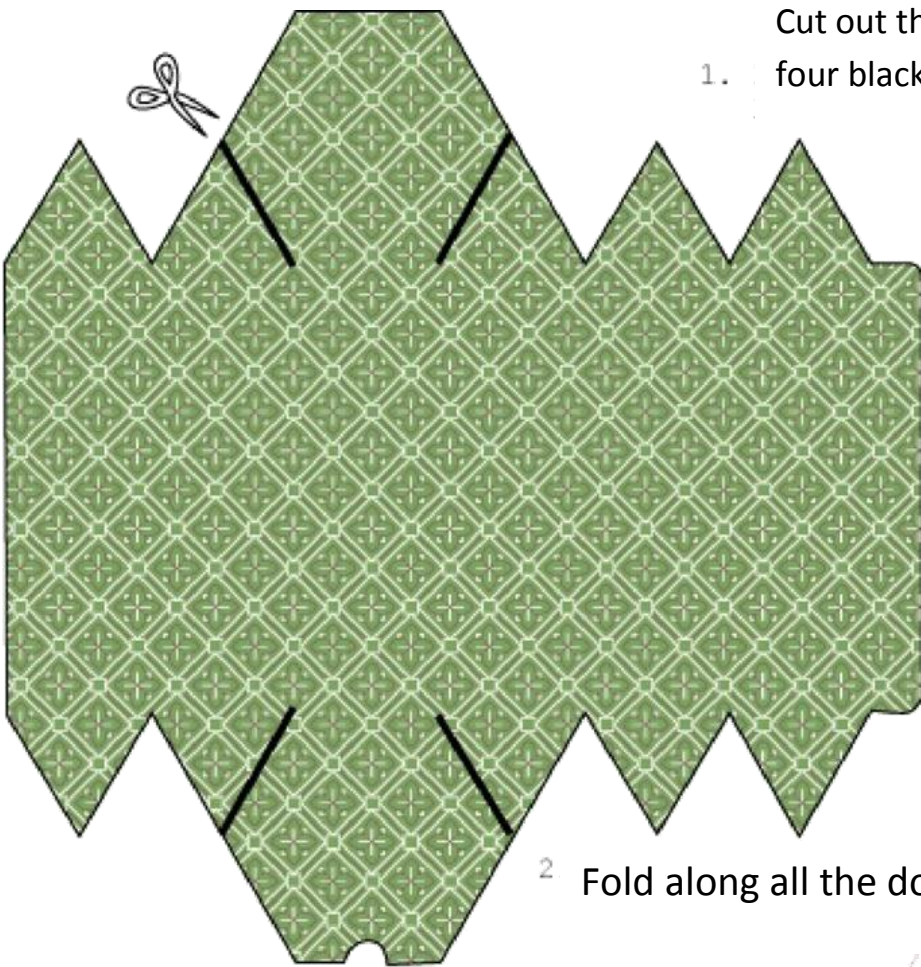


1. Cut out the shape and cut the four slits.

2. Fold where all the dotted lines are.



3. Glue tab A to the interior of the Grade A tab B in B. The bottom is formed without adhesive there between the different tongues/tabs. To form it, some folds will be reversed. Bring the C, D and D fold inwards to close, forming two "ears" with parts E and E.

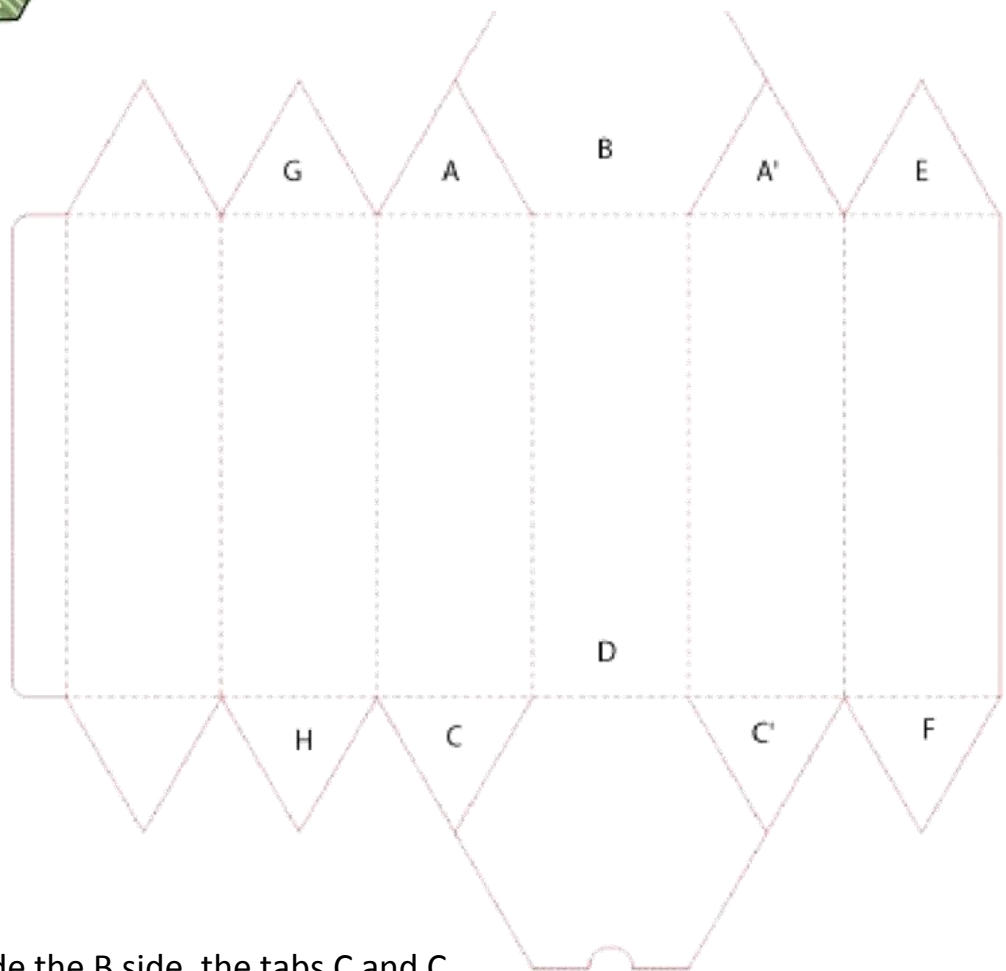


Cut out the shape and cut along the four black lines.

1.



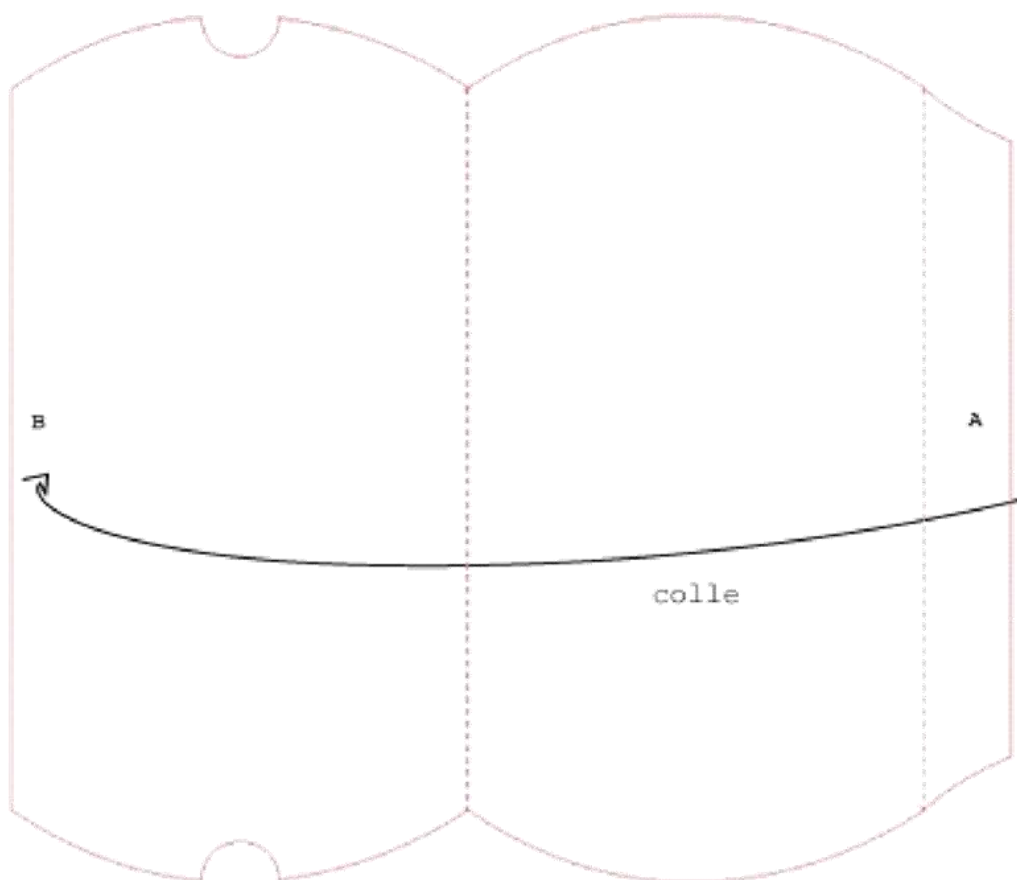
2 Fold along all the dotted lines.



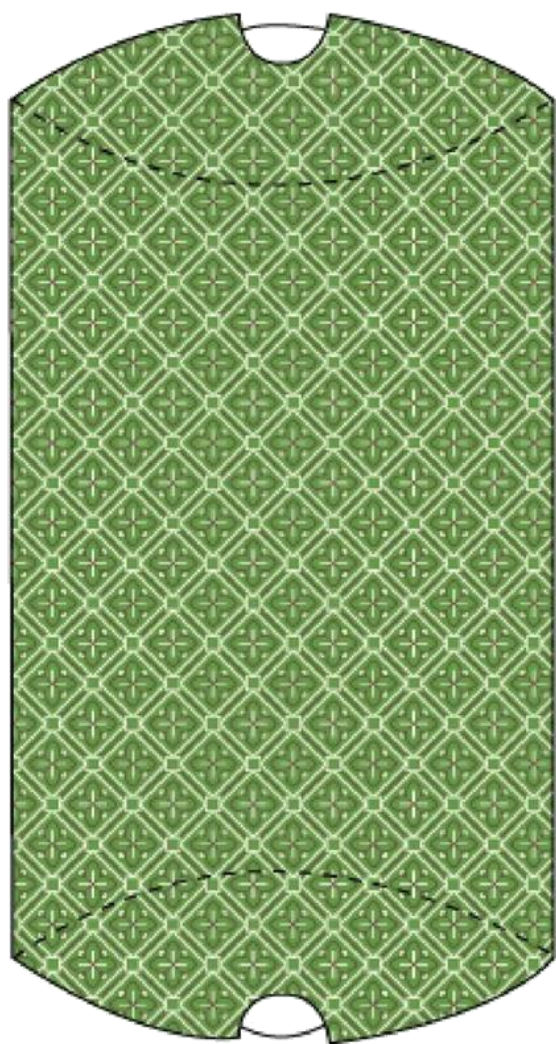
3. Glue tabs A and A inside the B side, the tabs C and C inside D. Paste B in E and F in D. To form the opening, glue/put G in the slits in B and H in D.

l'intérieur de D.  
sirée,

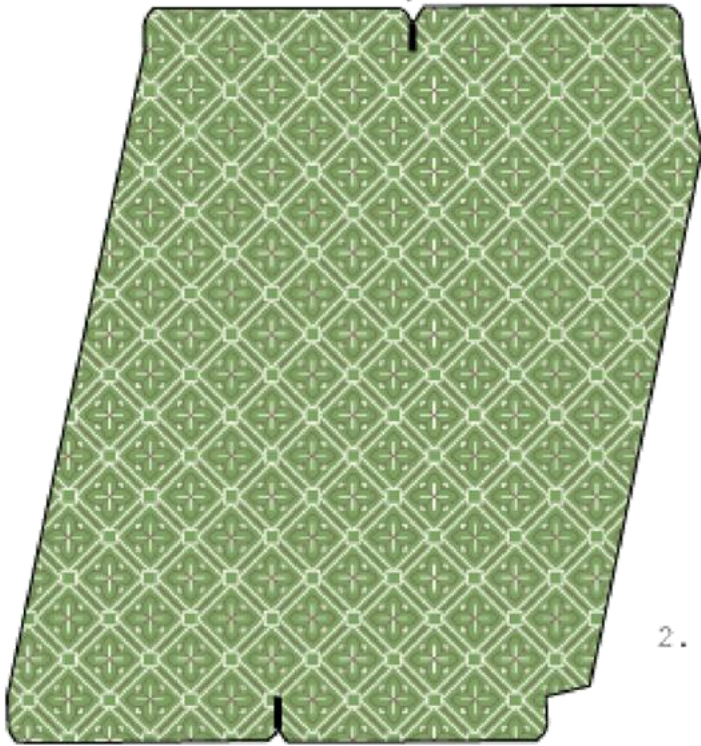
1. Fold along all dashed lines.



2. Glue tab A inside side B.

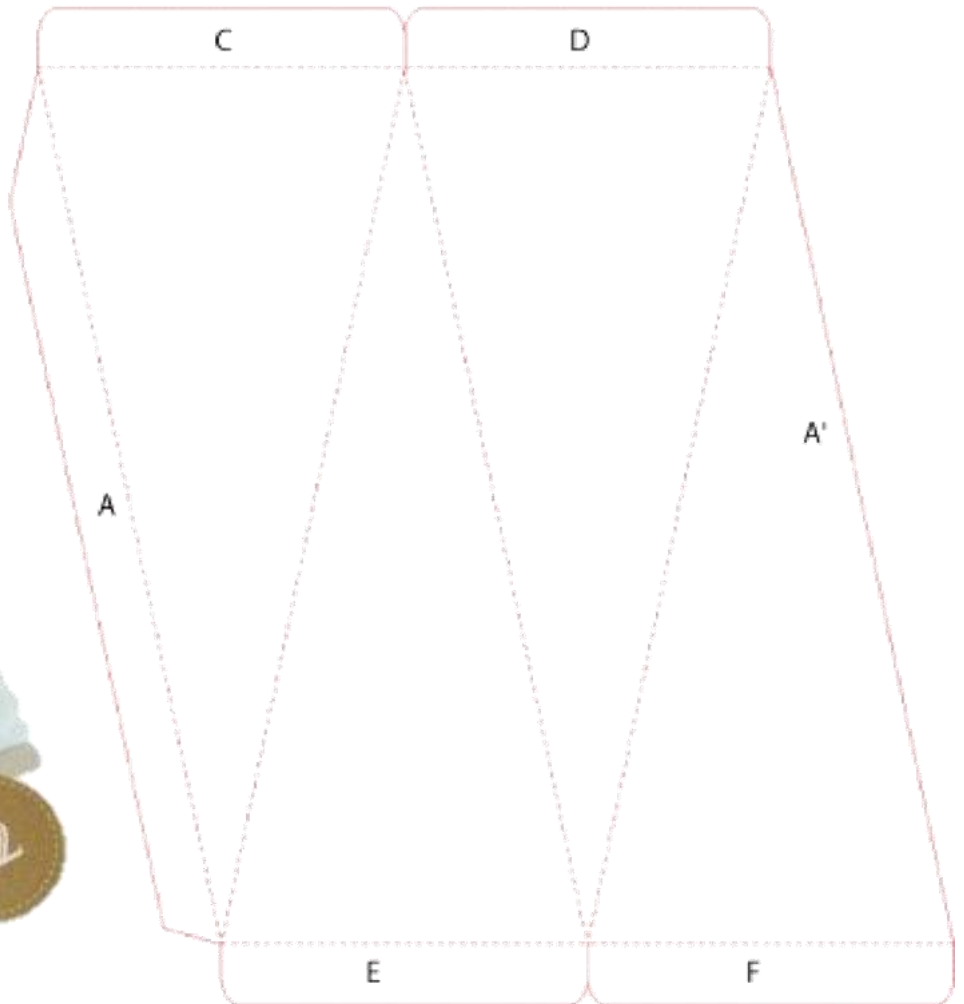


3. Fold the four sides to the inside of the box following the curved dots. Fold the first side with a tab open finish with solid scores along the lines to close the box.



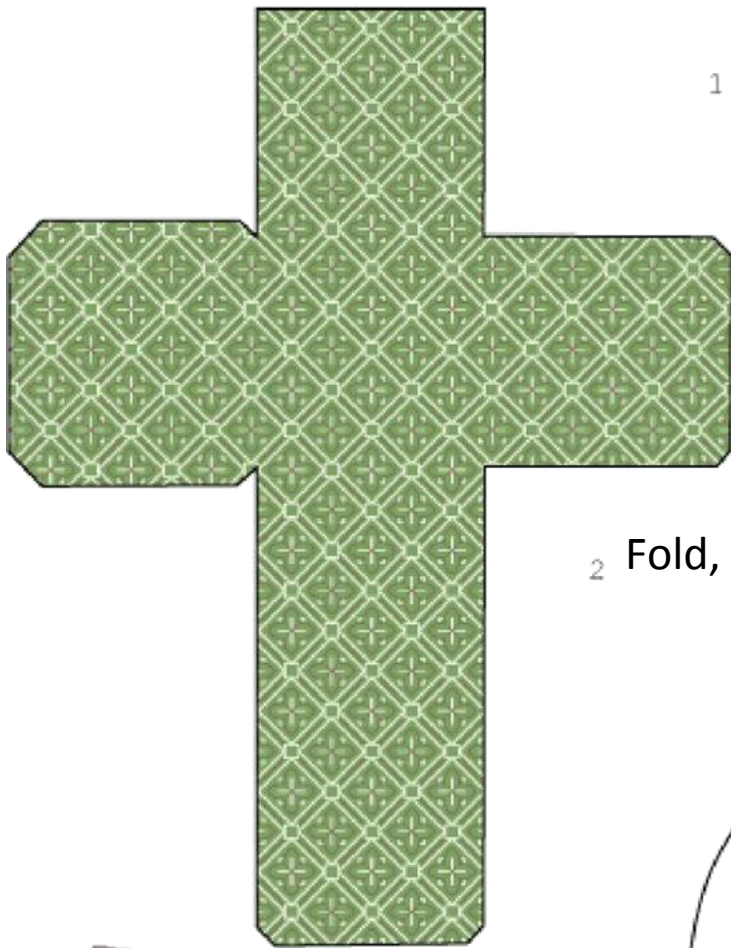
1. Slit the slots in the tabs.

2. Fold along the lines, following all the dots.



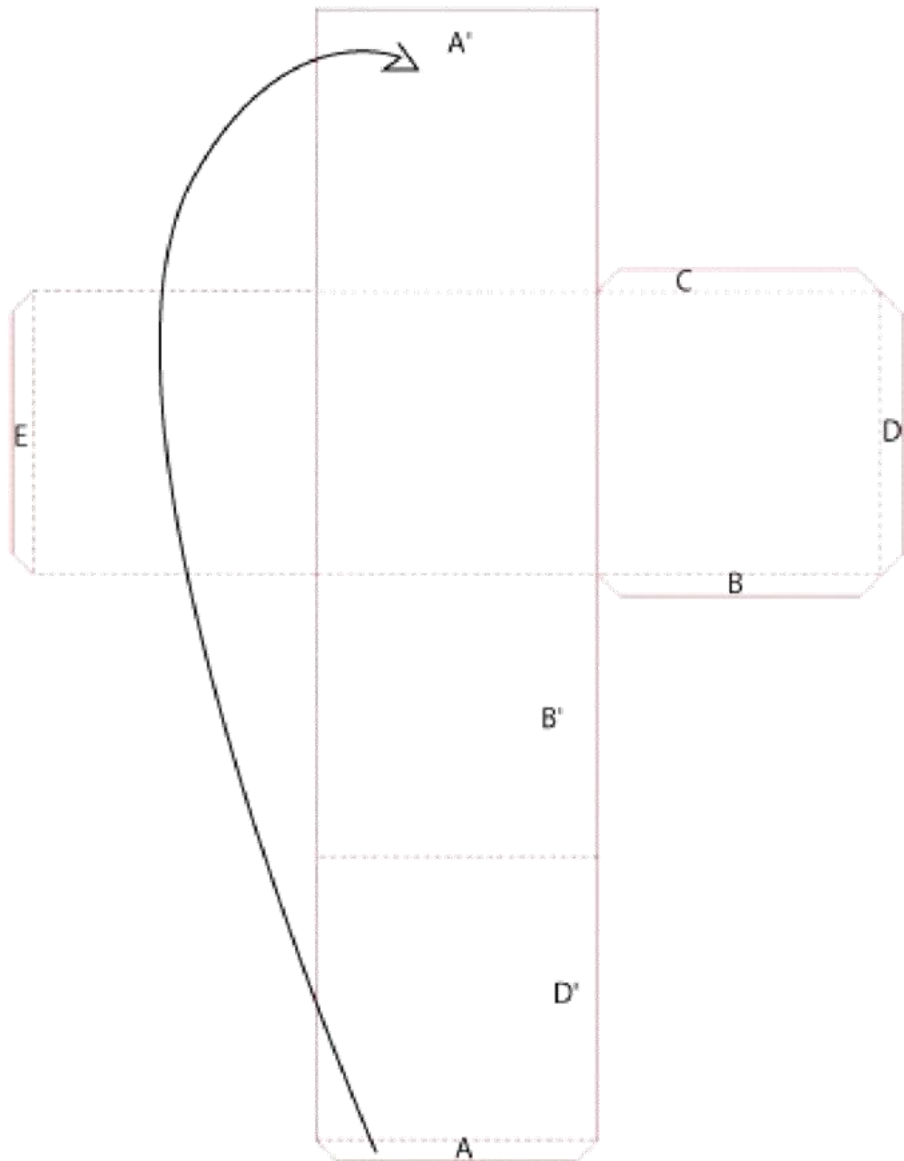
3. Glue tab A to the inside of side A to close the carton. Back tabs C and E inside the box and fold D and F to close.



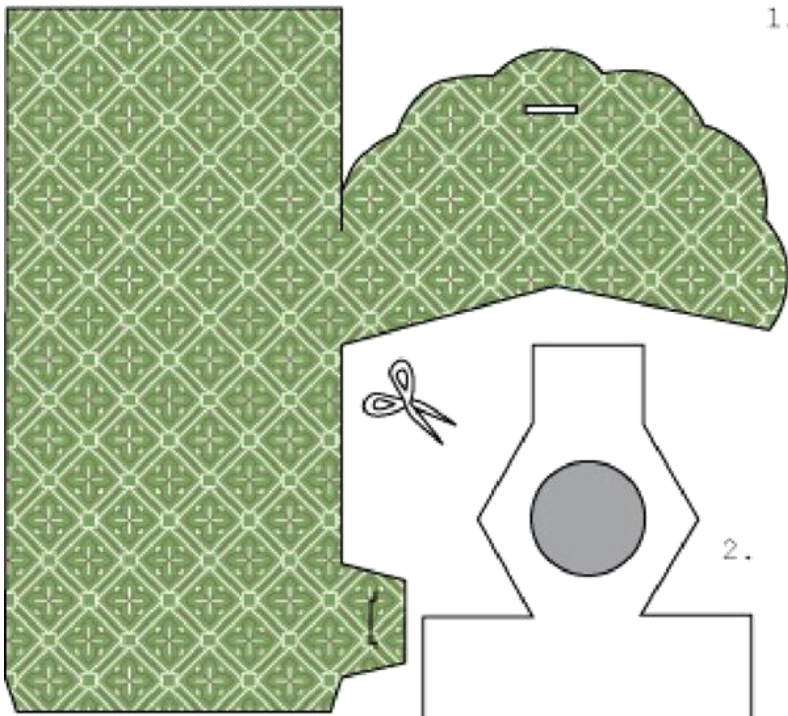


1 Cut out the pattern.

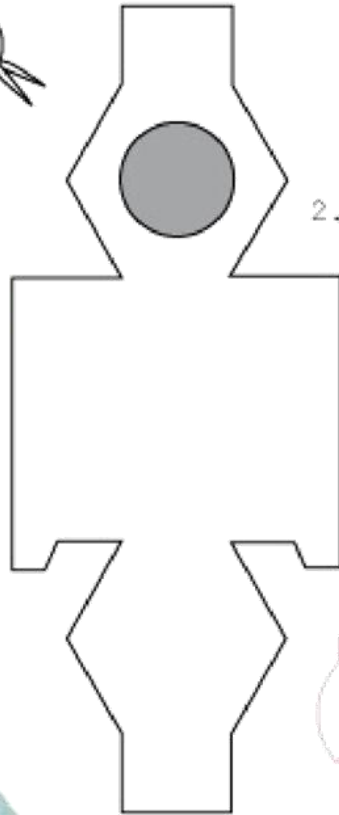
2 Fold, following all the dotted lines



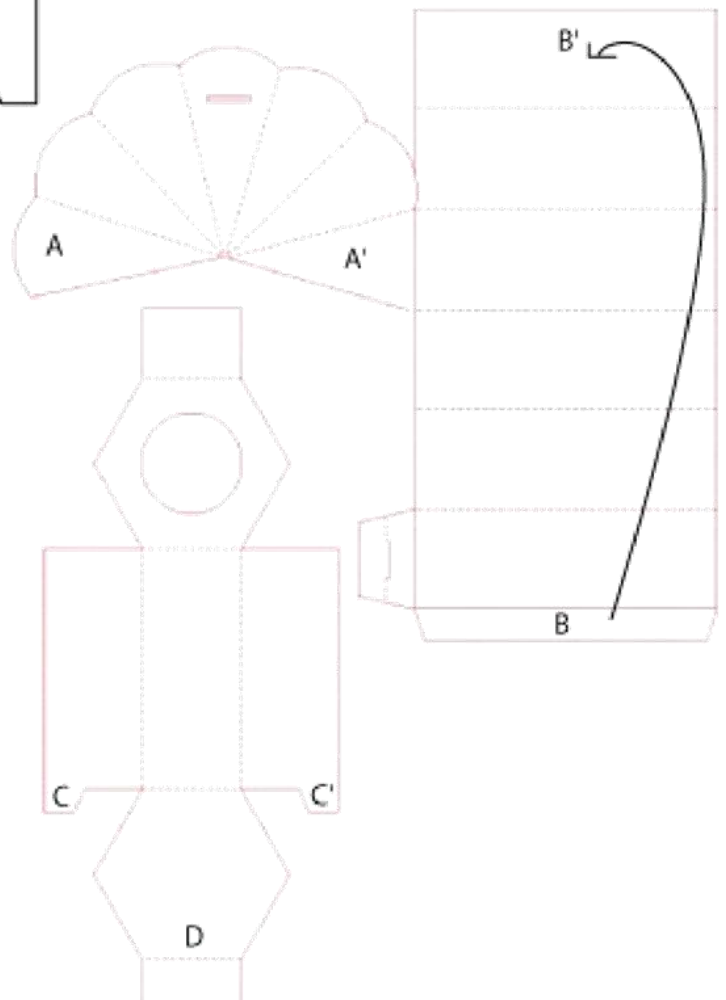
3. Glue tab A to the interior side of A, tab B in B, C and D in D. Use tab E to close the lid of the box.



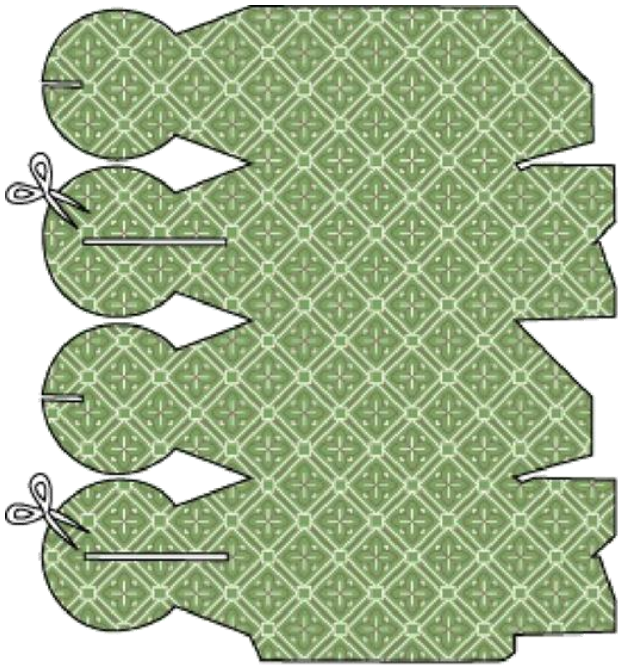
1. Incise the slots for closing the box and the side cover. Avoid the gray circle shape as you trim the interior and the bottom of the box.



2. Fold along the dotted lines. *Cut out the grey circle?*



3. Glue A to A to close the lid, the interior tab B to side B to close the box. Glue C and C tabs on the bottom D. Slide the tab into the slot and secure it with a small dot of glue.



1. Cut out the shape and the two white rectangles with scissors or a craft knife.
2. Fold following all the dotted lines. Green lines are a folding place where you will bend it to close the box.
3. Glue tab A inside side B. Close the bottom of the box, folding in 1 and 2 first, then 3 and 4. Close the top of the box by tucking the round shapes into each other through the slits.

